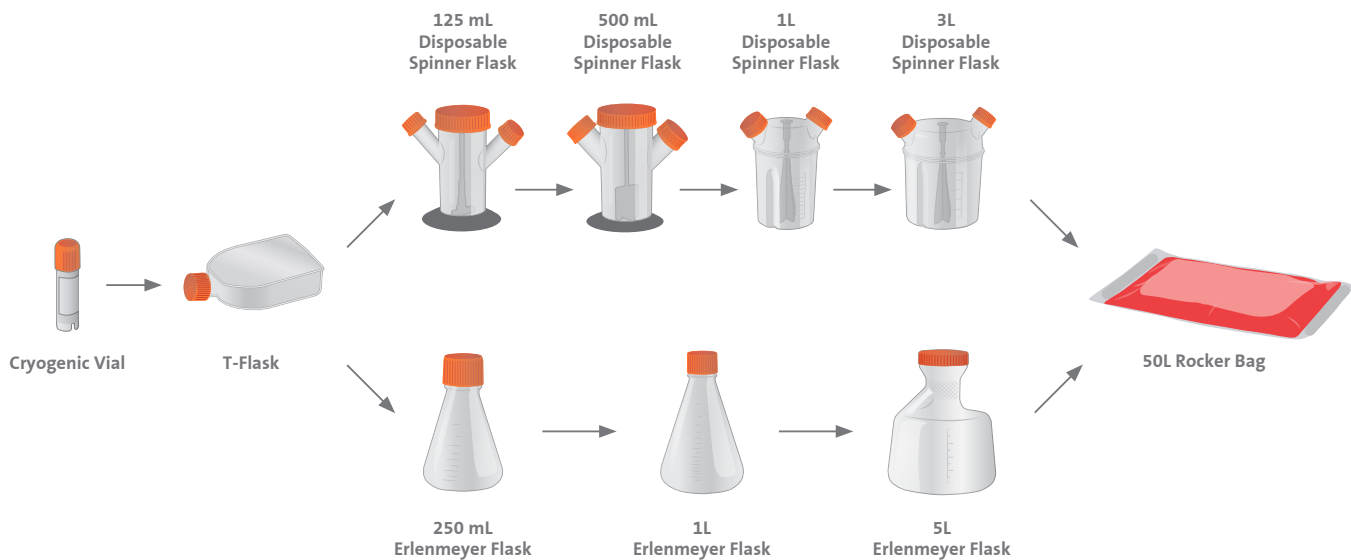


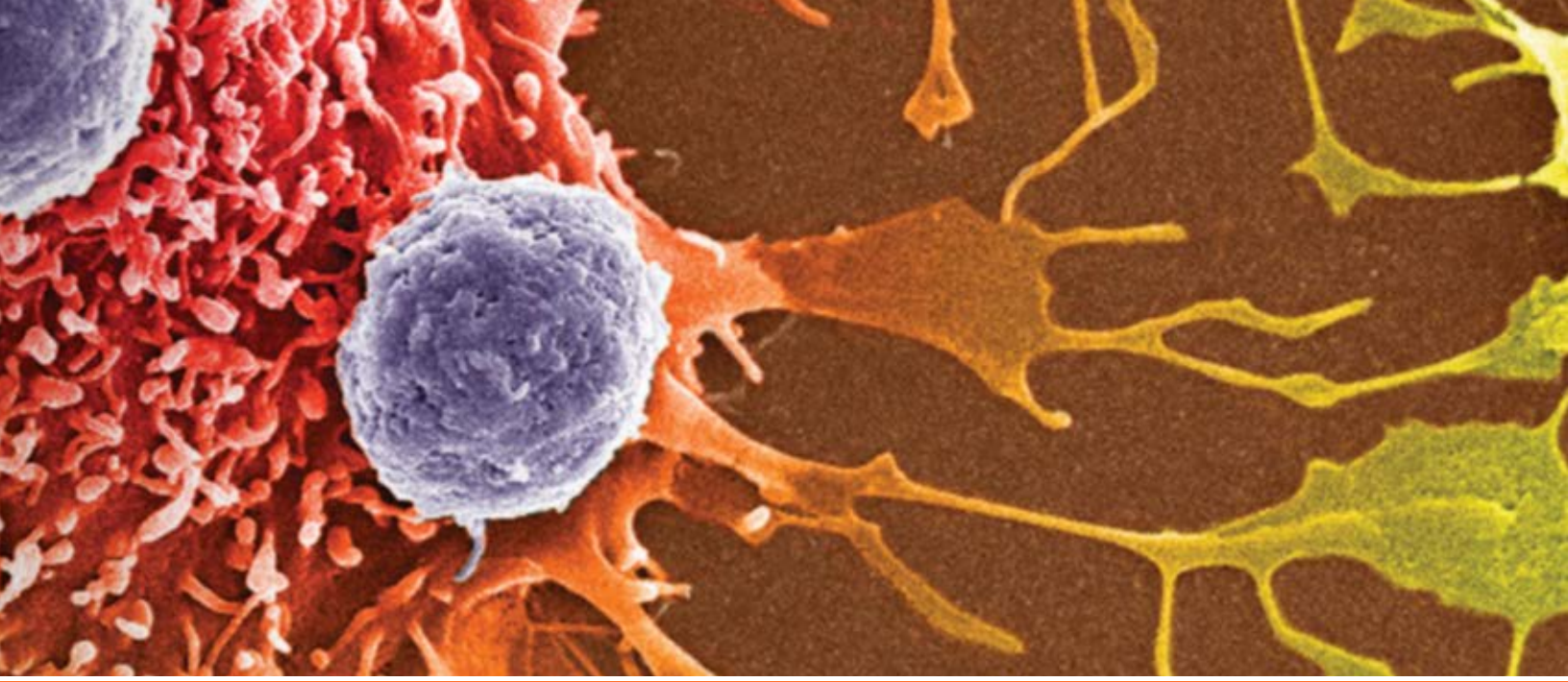
Multiply Your Cells, Not Your Work

Take the guesswork out of your cell expansion scale-up. Corning can be your single supplier of end-to-end workflow products for cell culture scale-up in process development. We offer validated products that span the standard workflow. Whether you are expanding suspension or adherent cell lines, we offer a full range of cell culture vessels – from flasks to 50L rocker bags. Our comprehensive portfolio of quality-controlled cell culture vessels enables you to seamlessly scale-up with peace of mind. You can be sure that the products you start with will be suitable for regulated drug manufacturing environments downstream. Below are two examples of typical suspension and adherent cell culture scale-up processes. Our expert field applications specialists work with customers to design a custom solution that fits specific project requirements.

Suspension Culture Scale-up

Need to scale-up from small-volume to large-volume suspension cell culture? Corning can take you there. Below we show two scale-up protocols that Corning scientists have used to expand suspension cell lines. All products are Corning brand and all are validated to work sequentially along the scale-up chain.





Adherent Culture Scale-up

Why multiply your workload by seeding several flasks when you can move them into a single stacked vessel?
Corning offers products to quickly and confidently take you from small-scale to large-scale adherent cell culture.
Below is a workflow that has been used by Corning scientists to expand adherent cell cultures.

