

# CORNING

## Enabling Rapid Multitenant Data Centre (MTDC) Connections

At Corning, we understand the challenges associated with outsourced facilities, whether you're an MTDC/ cloud provider or an enterprise client.

Wouldn't it be great to have a range of products and solutions that enable:

- Rapid deployments for low- to high-density applications
- Quick product availability so you can provide competitive SLAs
- Secure separation between live circuits for client piece of mind
- Usable vs. theoretical density
- A highly scalable platform for simple migration to higher-speed technologies and applications?

This overview highlights the extensive range of solutions we have developed for meet-me-room, distribution, and cage or hall environments. For maximum flexibility, improved lead times, and a reduction in the total cost of ownership, you can count on Corning.

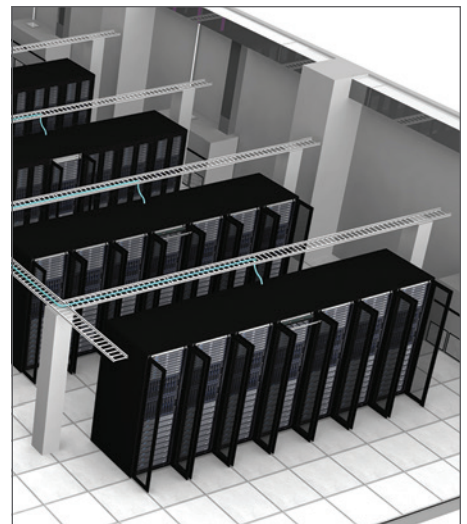
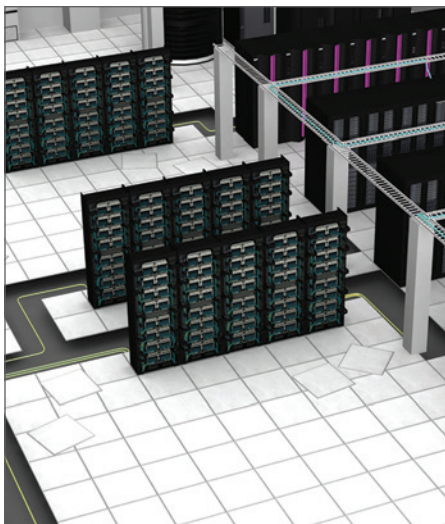
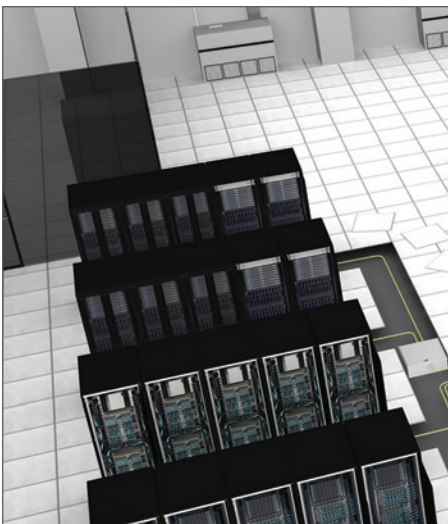
### Meet-Me-Room



### Main Distribution Area (MDA)



### Caged Area

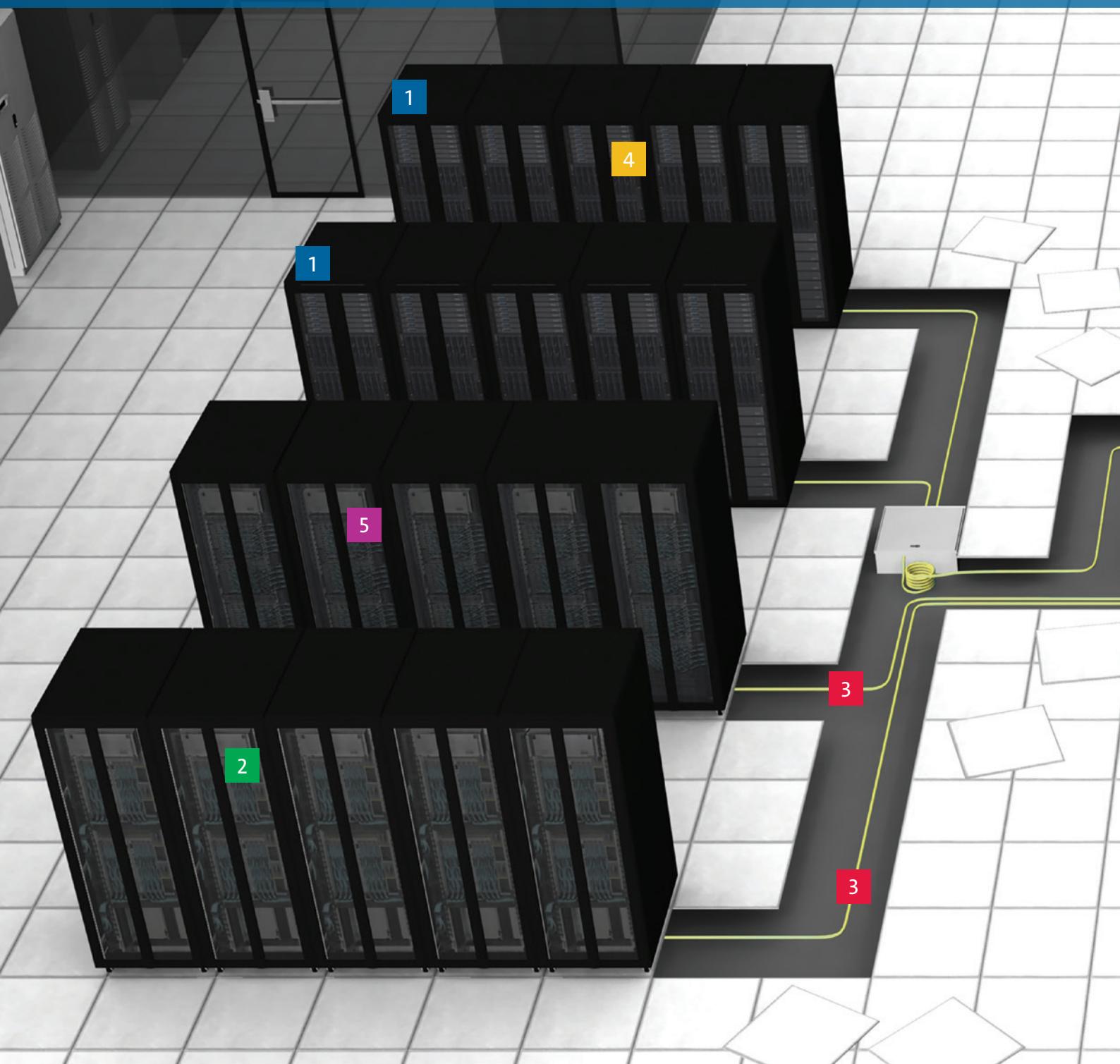




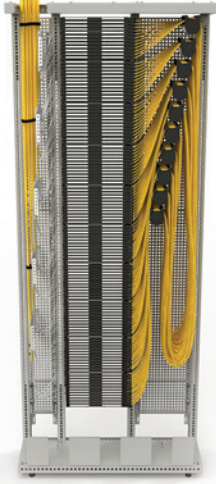
# Meet-Me-Room

## The Corning Value

- Enables rapid deployments with field-terminated, splice, or pre-terminated components
- Corning single-mode bend-optimised fibres are ITU-T G.657.A1 compliant, ensuring signal integrity throughout the link
- All cables comply to EU CPR legislation
- Single-jumper/patch cord length for frames simplifies inventory
- Easy access to individual connections maintain the integrity of LIVE circuits
- Corning innovations allow use of every port without compromising on client security
- Modular designs provide clear and simple migration paths to higher-speed technologies
- Worldwide distribution partners carry full solution inventory
  - Custom cable lengths can be made in days, not weeks, from Corning facilities



1



### Frames

- Up to 4,320 LC duplex connections with field-terminated, mechanical, and fusion splice options
- Up to 11,520 MTP® connections
- Single 4 m patch cord for all connections
- Simple access to individual circuits

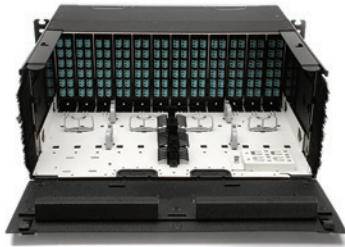
4



### Connectivity Hardware

- Field-terminated, mechanical, and fusion splice for SC and LC duplex
- Pre-terminated for SC and LC duplex, MTP
- Base-2, Base-8, and Base-12 options for 1G to 400G applications
- Adapter panel options for Base-2, Base-8, and Base-12 networks

2



### Housings

- Field-terminated, mechanical, and fusion splice for SC and LC duplex
- Pre-terminated LC duplex and MTP
- Fixed, sliding, and tilt and slide options
- Up to 288 LC duplex connections
- Full cable management capabilities
- Internal routing guides

5



### Connectivity Cables

- Jumper in a box (U.S./CAN only)
- SC, LC, MTP jumpers/patch cords

3



### Cables

- Indoor and indoor/outdoor cables for SC and LC duplex
- Plenum, riser, and LSZH™ options
- Reel in a box (U.S./CAN only)
- Pre-terminated LC duplex and MTP trunks up to 144 fibres

## Product Focus – Corning Frames

Single, dual, or back-to-back quad frame designs require only a **single 4-meter patch cord** to simplify stock management in your facility.

And for true meet-me-room scalability, in just a **42-square-meter footprint**, we can support:

- Over 155,000 LC ports with a Centrix™ frame
- Over 103,000 LC ports with an EDGE™ ODF



# Main Distribution Area (MDA)

## The Corning Value

- Installer or pre-terminated options with ultra-high-density for LC duplex and MTP® options
  - Reducing expensive DC real estate
- Single-jumper/patch cord length for frames simplifies inventory
- Corning single-mode bend-optimised fibres are ITU-T G.657.A1 compliant ensuring signal integrity throughout the link
- Complete cable management as standard- and single-finger access provides instant access to individual connections
- Universal wiring of pre-terminated components eliminates need for polarity management
- Port breakout capabilities for disaggregating higher-speed ports
- Supports network speeds from 1G to future-ready 400G



1



## Frames

- Up to 4,320 LC duplex connections with field-terminated, mechanical, and fusion splice options
- Up to 11,520 MTP® connections
- Single 4 m patch cords for all connections
- Simple access to individual circuits

4



## Connectivity Hardware

- Pre-terminated for SC and LC duplex, MTP
- Base-2, Base-8, and Base-12 options for 1G to 400G applications
- Adapter panel options for Base-2, Base-8, and Base-12 networks
- Pre-terminated port breakout modules to support port disaggregation of parallel optic applications

2



## Housings

- Field-terminated, mechanical, and fusion splice for SC and LC duplex
- Pre-terminated LC duplex and MTP
- Fixed, sliding, and tilt and slide, floor zone box options
- Up to 288 LC duplex connections
- Up to 288 MTP connections
- Full cable management capabilities
- Internal routing guides
- Containment system mounting brackets

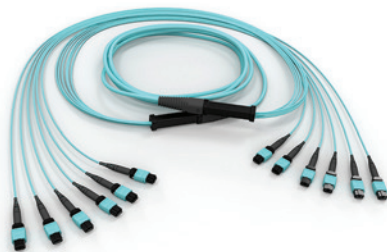
5



## Connectivity Cables

- Jumper in a box (U.S./CAN only)
- SC, LC, MTP jumpers/patch cords

3



## Cables

- Plenum, riser, and LSZH™ options
- Reel in a box (U.S./CAN only)
- Pre-terminated LC duplex and MTP trunks up to 144 fibres
- High-fibre-count pre-terminated MTP trunks up to 864 fibres

## Product Focus – Corning® ClearCurve® Fibre

Corning ClearCurve bend-insensitive fibres offer outstanding transmission performance in fibre optic cabling systems. Corning ClearCurve fibre was the world's first laser-optimised multimode fibre to withstand tight bends at or below a 7.5 mm radius with substantially less signal loss than traditional fibres, while being fully standards compliant and backwards compatible.

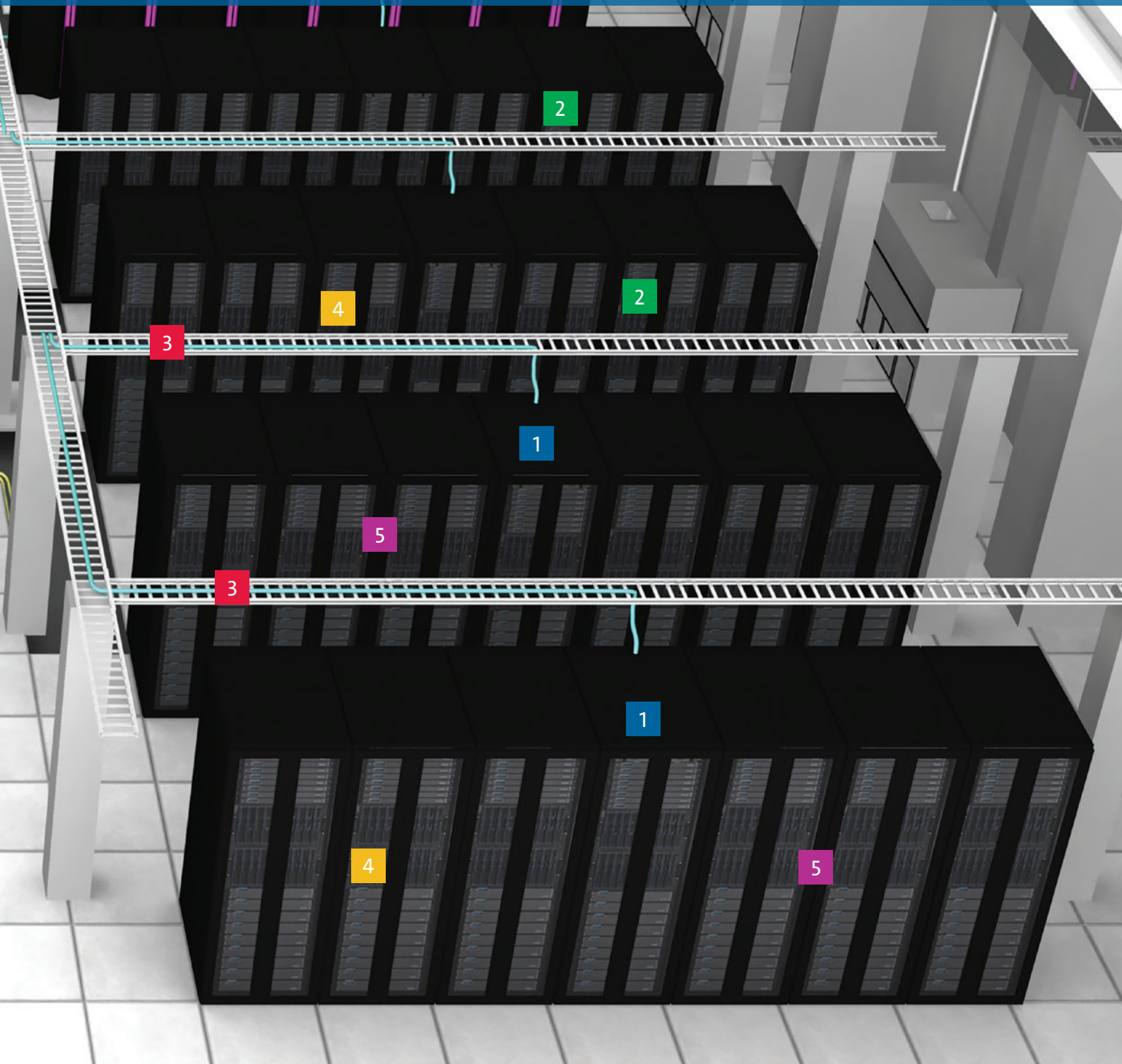
Customers find value in not having to worry about bend radius, and a robust fibre enables easier cable routing for neater installations. The additional optical performance maintains signal integrity in the most arduous of conditions.



# Caged Area

## The Corning Value

- Ultra-high-density housing options from 1U to 4U maximise rack, cage, or hall footprints
- High-fibre-count cables provide options up to 864-fiber in a single cable sheath for rapid deployments
- Corning single-mode bend-optimised fibres are ITU-T G.657.A1 compliant ensuring signal integrity throughout the link
- Straight and stagger cut harness options provide clean and simple port mapping to active electronics whilst maintaining 100 percent fibre utilisation
- Superior labelling solutions for easy port identification
- VFL-compatible shutters eliminate need for dust caps
- Port breakout capabilities for disaggregating higher-speed ports
- Supports network speeds from 1G to future-ready 400G
- Integrated passive optical tapping capabilities
- Corning rapid manufacturing capabilities can maintain customer SLAs – even with custom-length components



1



## Frames

- Up to 4,320 LC duplex connections with field-terminated, mechanical, and fusion splice options
- Up to 11,520 MTP® connections
- Single 4 m patch cord for all connections
- Simple access to individual circuits

4



## Connectivity Hardware

- Field-terminated, mechanical, and fusion splice for SC and LC duplex
- Adapter panel options for Base-2, Base-8, and Base-12 networks
- Pre-terminated for SC and LC duplex, MTP
- Pre-terminated port breakout modules to support port disaggregation of parallel optic applications
- Base-2, Base-8, and Base-12 options for 1G to 400G applications

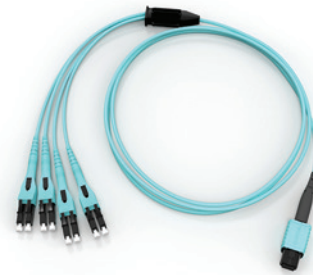
2



## Housings

- Field-terminated, mechanical, and fusion splice for SC and LC duplex
- Up to 288 LC duplex connections
- Pre-terminated LC duplex and MTP
- Up to 288 MTP connections
- Fixed, sliding, and tilt and slide options
- Full cable management capabilities
- Internal routing guides

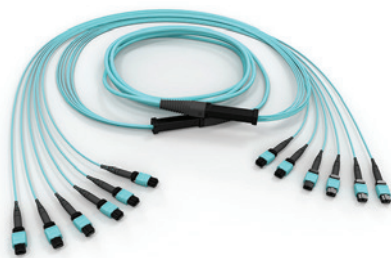
5



## Connectivity Cables

- Jumper in a box (U.S./CAN only)
- Reverse-polarity LC duplex jumpers/patch cords
- MTP jumpers/patch cords
- Port breakout harnesses to support port disaggregation of parallel optic applications
- Base-8 and Base-12 harnesses for high-density switch or line card distribution

3



## Cables

- Plenum, riser, and LSZH™ options
- Pre-terminated LC duplex and MTP trunks up to 144 fibres
- Reel in a box (U.S./CAN only)
- High-fibre-count pre-terminated MTP trunks up to 864 fibres

## Product Focus

Do you want the most flexible, ultra-high-density solutions to use a **single-housing footprint**?

Corning offers the **broadest range** of product options in our fully modular EDGE™ and EDGE8™ solution housings.

**Modules, MTP adapter panels, splice panels (EDGE only), TAP modules, port breakout modules (EDGE8 only), high-fibre-count trunks, and harnesses** all use **universal wiring** to eliminate the need for polarity management in preterminated solutions.

## Want to know more?

Contact a Corning Customer Care Representative at [00 800 2676 4641](tel:0080026764641).

The Corning logo consists of a solid blue square with the word "CORNING" written in white, uppercase, sans-serif font centered within it.

CORNING

Corning Optical Communications GmbH & Co. KG • Leipziger Strasse 121 • 10117 Berlin, GERMANY  
+00 800 2676 4641 • FAX: +49 30 5303 2335 • [www.corning.com/opcomm/emea](http://www.corning.com/opcomm/emea)

Corning Optical Communications reserves the right to improve, enhance, and modify the features and specifications of Corning Optical Communications products without prior notification. A complete listing of the trademarks of Corning Optical Communications is available at [www.corning.com/opcomm/trademarks](http://www.corning.com/opcomm/trademarks). All other trademarks are the properties of their respective owners. Corning Optical Communications is ISO 9001 certified. © 2017, 2018 Corning Optical Communications. All rights reserved. LAN-2185-A4-BEN / September 2018