



CORNING

Jumper in a Box (JIAB)

Part Number Configurators

Part Number Configurators

SC and LC Simplex | Jumper in a Box

-
SR
2
-

-

1

2

3

4

5

1 Select connector code.

Single-mode
 0202 = LC UPC
 2222 = LC APC
 2244 = LC APC/SC APC
 4444 = SC APC
 5858 = SC UPC

2 Defines cable and fiber type.

SR2 = Simplex R 1.6 mm,
 Single-mode (OS2)

3 Select quantity. Quantity per box is determined by length.

B = Cardboard Box	P = Plastic Box	R = Refill
B70 = 1-5 m or 1-16 ft	P70 = 1-5 m or 1-16 ft	R70 = 1-5 m or 1-16 ft
B50 = 6-10 m or 17-35 ft	P50 = 6-10 m or 17-35 ft	R50 = 6-10 m or 17-35 ft
B40 = 11-15 m or 36-52 ft	P40 = 11-15 m or 36-52 ft	R40 = 11-15 m or 36-52 ft
B30 = 16-20 m or 53-66 ft	P30 = 16-20 m or 53-66 ft	R30 = 16-20 m or 53-66 ft

4 Select jumper length*.

01-20 m
 01-65 ft

**Maximum length is 20 m or 65 ft.*

5 Select unit of measure.

F = Feet
 M = Meters

SC Duplex | Jumper in a Box

-

-

-

1

2

3

4

5

1 Select connector code.

Multimode Duplex
 5757 = SC PC
 Single-mode Duplex
 7272 = SC UPC

2 Defines cable and fiber type.

ZR4 = 2.0 mm Zipcord R MM OM4
 ZR3 = 2.0 mm Zipcord R MM OM3
 ZR2 = 2.0 mm Zipcord R SM OS2
 ZR1 = 2.0 mm Zipcord R MM OM1

3 Select quantity. Quantity per box is determined by length.

B = Cardboard Box	P = Plastic Box	R = Refill
B60 = 1-2 m or 1-7 ft	P60 = 1-2 m or 1-7 ft	R60 = 1-2 m or 1-7 ft
B50 = 3-4 m or 8-13 ft	P50 = 3-4 m or 8-13 ft	R50 = 3-4 m or 8-13 ft
B40 = 5-6 m or 14-20 ft	P40 = 5-6 m or 14-20 ft	R40 = 5-6 m or 14-20 ft
B35 = 7-8 m or 21-26 ft	P35 = 7-8 m or 21-26 ft	R35 = 7-8 m or 21-26 ft
B30 = 9-10 m or 27-33 ft	P30 = 9-10 m or 27-33 ft	R30 = 9-10 m or 27-33 ft

4 Select jumper length*.

01-10 m
 01-33 ft

**Maximum length is 10 m or 33 ft.*

5 Select unit of measure.

F = Feet
 M = Meters

Part Number Configurators

LC Duplex | Jumper in a Box

-

-

-

1

2

3

4

5

1 Select connector code.

Multimode Duplex
0505 = LC PC

Single-mode Duplex
0404 = LC UPC

3 Select quantity. Quantity per box is determined by length.

<p>B = Cardboard Box</p> <p>B70 = 1 m or 3 ft</p> <p>B60 = 2 m or 4-7 ft</p> <p>B50 = 3-5 m or 8-16 ft</p> <p>B40 = 6-8 m or 17-26 ft</p> <p>B30 = 9-10 m or 27-33 ft</p>	<p>P = Plastic Box</p> <p>P70 = 1 m or 3 ft</p> <p>P60 = 2 m or 4-7 ft</p> <p>P50 = 3-5 m or 8-16 ft</p> <p>P40 = 6-8 m or 17-26 ft</p> <p>P30 = 9-10 m or 27-33 ft</p>	<p>R = Refill</p> <p>R70 = 1 m or 3 ft</p> <p>R60 = 2 m or 4-7 ft</p> <p>R50 = 3-5 m or 8-16 ft</p> <p>R40 = 6-8 m or 17-26 ft</p> <p>R30 = 9-10 m or 27-33 ft</p>
--	--	---

4 Select jumper length*.

01-10 m
01-33 ft

**Maximum length is 10 m or 33 ft.*

2 Defines cable and fiber type.

ZR4 = 2.0 mm Zipcord R MM OM4
ZR3 = 2.0 mm Zipcord R MM OM3
ZR2 = 2.0 mm Zipcord R SM OS2
ZR1 = 2.0 mm Zipcord R MM OM1

5 Select unit of measure.

F = Feet
M = Meters

LC Duplex Reverse Polarity Uniboot | Jumper in a Box

-

-

-

1

2

3

4

5

1 Select connector code.

Multimode Duplex
7979 = LC PC Uniboot

Single-mode Duplex
7878 = LC UPC Uniboot

3 Select quantity. Quantity per box is determined by length.

<p>B = Cardboard Box</p> <p>B70 = 1-5 m or 1-16 ft</p> <p>B50 = 6-10 m or 17-35 ft</p> <p>B40 = 11-15 m or 36-52 ft</p> <p>B30 = 16-20 m or 53-66 ft</p>	<p>P = Plastic Box</p> <p>P70 = 1-5 m or 1-16 ft</p> <p>P50 = 6-10 m or 17-35 ft</p> <p>P40 = 11-15 m or 36-52 ft</p> <p>P30 = 16-20 m or 53-66 ft</p>	<p>R = Refill</p> <p>R70 = 1-5 m or 1-16 ft</p> <p>R50 = 6-10 m or 17-35 ft</p> <p>R40 = 11-15 m or 36-52 ft</p> <p>R30 = 16-20 m or 53-66 ft</p>
---	---	--

4 Select jumper length*.

01-20 meters
01-65 feet

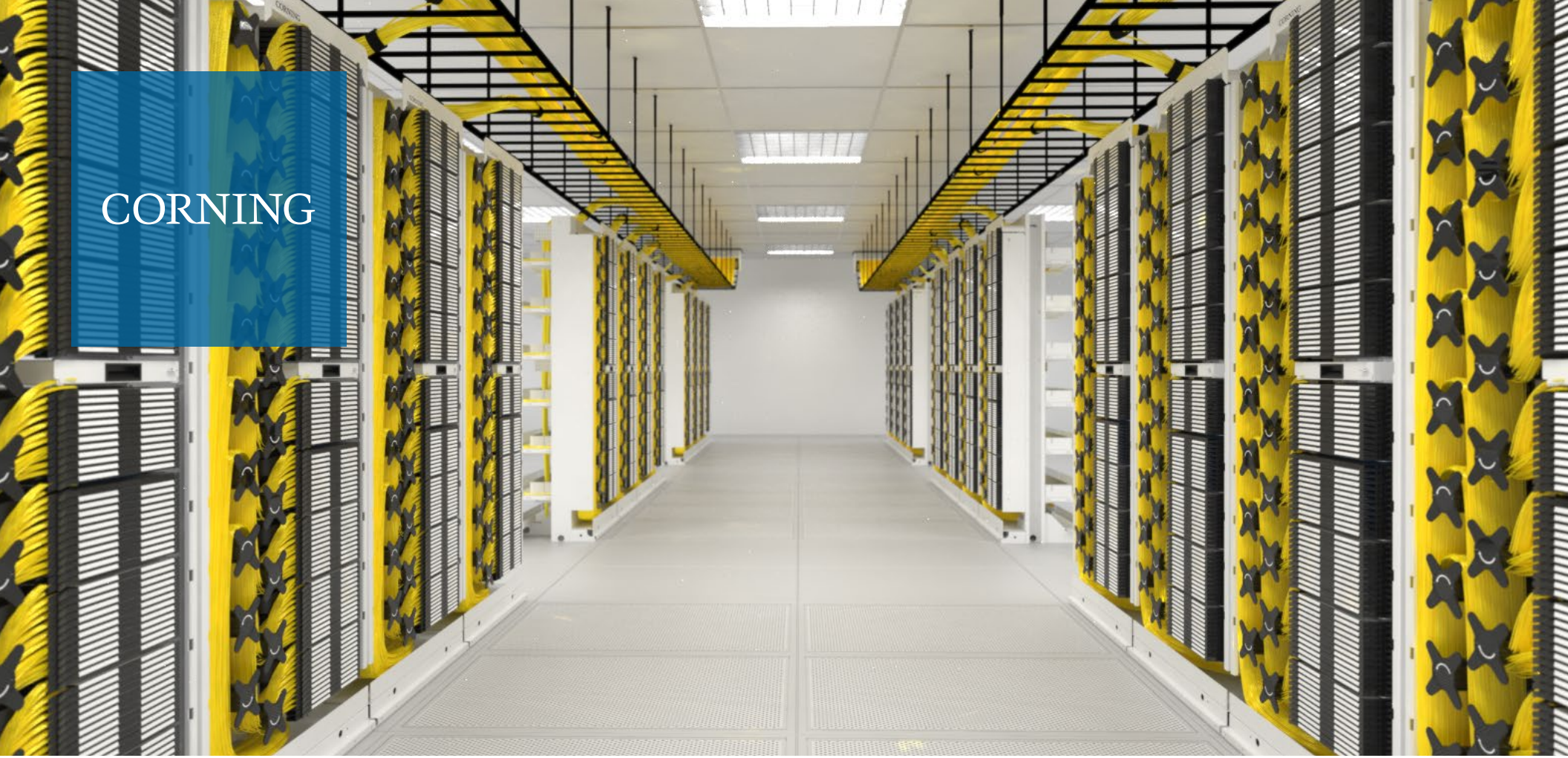
**Maximum length is 20 m or 65 ft.*

2 Defines cable and fiber type.

OM4 = DFX 250 R MM OM4
OM3 = DFX 250 R MM OM3
OS2 = DFX 250 R SM OS2, Corning® ClearCurve®

5 Select unit of measure.

F = Feet
M = Meters



CORNING

LET'S CONNECT!



CO/HE Solutions
corning.com/isp

Hybrid Fiber Coax Solutions
corning.com/mso

Community Broadband Solutions
corning.com/community-broadband

FTTH Solutions
corning.com/ftth

Corning Optical Communications LLC • 4200 Corning Place • Charlotte, NC 28216 USA • 800-743-2675 • FAX: 828-325-5060 • International: +1-828-901-5000 • www.corning.com/opcomm

Corning Optical Communications reserves the right to improve, enhance, and modify the features and specifications of Corning Optical Communications products without prior notification. A complete listing of the trademarks of Corning Optical Communications is available at www.corning.com/opcomm/trademarks. All other trademarks are the properties of their respective owners. Corning Optical Communications is ISO 9001 certified. © 2019, 2023 Corning Optical Communications. All rights reserved. CRR-1187-AEN / March 2023